

## THE PREHISTORIC SETTLEMENT AT TOZKOPARAN (UNYE-ORDU-TURKEY)

Harun OY\*

### Z

Tozkoparan, Trkiye'nin kuzeydoęusunda Ordu ili nye ilesindeir. Yerleřme Karadeniz sahiline yakın bir alanda karayolu zerindedir. Prehistorik dnemlerde yerleřmenin bulunduęu vadi deniz kıyısında olmalıdır. Yerleřmenin bulunduęu Cevizderesi vadisinde 1945 yılında K. Kkten tarafından arařtırmalar gerekleřtirilmiřtir. K. Kkten'in arařtırmaları sonucunda blgede Paleolitik dnem aletlerinin varlıęı tespit edilmiřtir. Tozkoparan'da yaptığımız incelemelerde Paleolitik dnem akmaktařı aletlerinin yanı sıra Ge Kalkolitik ve Erken Tun aęı'na tarihlenen seramikler bulunmuřtur. Bu nedenle yerleřimin uzun bir zaman diliminde iskan edildięi ortaya ıkmaktadır. Yine yerleřmenin bulunduęu alanda Hellenistik/Roma dnemine tarihlenen anıtsal bir kaya mezarı da bulunur. Karadeniz'in gneydoęusunda, Trkiye'nin kuzeydoęu kıyılarında Prehistorik dnem yerleřimleri bilinmemektedir. Bu blge yoęun bitki rtsyle kaplıdır. Bunun sonucunda ise blgenin coęrafi durumuna baęlı olarak bu dnem arařtırmaları olduka azdır. Burada deęerlendireceğimiz Tozkoparan yerleřiminden bařlayarak Trkiye'nin kuzeydoęu deniz kıyısında herhangi bir Prehistorik yerleřim bulunmamıřtır. Bu nedenle Tozkoparan yerleřimi nemlidir.

**Anahtar kelimeler:** Paleolitik, Kalkolitik aę, İlk Tun aęı, Karadeniz, nye, Ordu.

### ABSTRACT

At Tozkoparan in the district of Unye in Ordu, a settlement has been discovered with finds dating to the Palaeolithic, Late Chalcolithic and Early Bronze Age. Since there are no other Prehistoric settlements on the northeastern coast of Turkey, the Tozkoparan settlement is an important site and serves as an example for Prehistoric habitation on the southeast Black Sea coast. The settlement is on the highway in a region close to the Black Sea coast. The valley where the settlement was located in Prehistoric times should be at the sea shore. In 1945, Kokten carried out researches in the valley of Cevizderesi where the settlement was located. As a result of Kokten's researches, the presence of Palaeolithic tools was found in the area. In the settlements we have found sherds dating to the Late Chalcolithic and Early Bronze

---

\* Yrd. Do. Dr., Ordu niversitesi Fen Edebiyat Fakltesi Tarih Blm/ORDU, ORCID: 0000-0002-1901-5128, harun\_oy@hotmail.com

Age as well as the Palaeolithic flint tools. For this reason, it appears that the settlement has been ruled over a long period of time. The area on which the settlement is located also has a monumental rock tomb dating to the Hellenistic / Roman period. Prehistoric settlements are unknown on the northeast coast of Turkey, south of the Black Sea. This area is covered with dense vegetation. Due to the geographical situation of the region, Prehistoric period researches are very few. For this reason, the position, importance and prehistoric materials of the settlement are evaluated in this article.

**Keywords:** Palaeolithic, Chalcolithic Age, Early Bronze Age, Black Sea, Unye, Turkey.

The early periods of the coast of Unye and Ordu region are unknown. Some previous studies have reported early findings in the Unye area, but no detailed information is available on this subject. For this reason, our survey in the coastal region revealed early findings only on Tozkoparan. Therefore, the settlement of Tozkoparan is evaluated in this article (Fig. 1, 2).

Tozkoparan is located in the district of Unye in Ordu, north of Turkey. The Tozkoparan settlement is located 4 km east of Unye, close to the highway and the coast. It is located on a sloping ground in the valley of Cevizderesi. In our survey in the region, Palaeolithic, Late Chalcolithic and Early Bronze Age finds were determined. A few natural caves have been investigated in our survey around Cevizderesi valley and its vicinity, but no early settlement except for Tozkoparan has been identified. Kokten refers to Paleolithic finds in Yuceler Village and its surroundings in some areas. However, our survey on the fields investigated by Kokten did not reach any finds other than Tozkoparan. Tozkoparan and its surroundings are under the threat of the Unye Cement Factory. The area where the cement factory supplies raw material is in the same area as the Tozkoparan settlement. For this reason, our research in the area is very important.

Prehistoric period studies in the north-east of Turkey are not sufficient. Although there is little interest in this region of Turkey, a large number of research and excavation work is still taking place in other regions. The work done in the Ordu region has been limited by some previous studies. These studies are generally reportable and do not provide detailed information.

The researches carried out by Kokten around Unye, Yuceler Village and Cevizderesi revealed the Paleolithic finds. Kokten found tools such as scrapers, cutters and blades which were estimated to belong to the Middle and Upper Palaeolithic with a hand axe of the flint of the Lower Palaeolithic during the researches carried out by the Ordu in the town of Unye (Kokten 1962). The research conducted by Ozsait in the provinces and districts of Ordu proved many Prehistoric settlements dating from the Chalcolithic Age to the Roman Period (Ozsait 1992, 1995, 2008). Some of these studies were carried out in Unye. Cilingiroglu investigated the Tozkoparan rock tomb

with the Unye Castle and rock tombs in the researches he performed in the province of Ordu (Cilingiroglu 1987). Hacer Kumandas's master's thesis on the rock tombs of the Ordu region examined rock graves found in Unye (Kumandas 2004). There is also the work of Basgelen on the history and archeology of Ordu-Mesudiye (Basgelen 2010). In addition, information about Ordu province is given in ancient sources (Isik 2001). The archaeological excavations are continuing at Kurul Castle in Ordu Province and Cingirt Kayası in Ordu-Fatsa (Erol 2015, 2016). These excavations only yielded Hellenistic and Roman finds.

Dundartepe and Bafra-Ikiztepe settlements are known around Samsun on the coast of the north of Turkey. Ikiztepe is located in the Bafra Plain 55 km north of Samsun, close to where the Kızılırmak River flows into the Black Sea. Ikiztepe is the most important center where the archaeological excavations are carried out in the Middle Black Sea region of Turkey. The settlement at Ikiztepe started from the Late Chalcolithic Age and settled down to the Early Bronze Age, the Hittite Age, the Iron Age and the Roman Period (Alkim et al. 1988). The most important center for comparison with the Tozkoparan settlement is the Ikiztepe settlement.

The number of Prehistoric settlements increases as one goes from the north to the inner regions. However, no further prehistoric settlement is known on the shore as far east as the Tozkoparan settlement. For this reason, the Tozkoparan settlement is the only settlement known for now on the coastal part of the north-east of Turkey. It is important for being an example for settlements related to the sea in the prehistoric period in the Black Sea.

Transportation to the plains in the north of Turkey is easier. However, as one goes to the north-east, mountains prevent access. For this reason, settlement in the southeast coast of the Black Sea occurred later. The existence of local tribes that are scattered throughout the region before the Greeks is known (Xenophon, *Anabasis*, V). In the 7th century B.C., Greeks established some colonies like Sinope, Trapezus in the region (Tekin 2008: 70-75). Prehistoric settlements that reveal early periods of the region are limited. Tozkoparan settlement is an important point for this reason. The connections of the zone are mostly internal and this connection is provided by a large number of river valleys in the region.

Tozkoparan is located on the natural road route in the valley of Cevizderesi. Since access is restricted from the coasts, the general connections are through the inner parts through the valleys. In Antiquity sea route was used. Xenophon (4th century BC) states that the Greeks moved from Trabzon to Ordu by land with difficult conditions to return to Greece, and that they continued by sea from Ordu (Xenophon, *Anabasis*, V). Geographical difficulties have made the sea route convenient for transportation. There is no difficulty in transportation from the west to the settlement. It is connect-

ed to the inner zone with the Cevizderesi, which is situated immediately on the coast. But towards the east, mountains restrict transportation.

Despite the Prehistoric settlements that are few in the coastal areas of the region, there are many Prehistoric settlements in the inner parts of the region. Because of the mountainous land in the north of Turkey, transportation through the inner parts is provided by small river valleys between these mountains. The area around Tozkoparan is accessible via Cevizderesi and Kumru-Mesudiye to the inner regions of Tokat and Turkey. These road connections were also used by the Romans in the 2<sup>nd</sup> and 4<sup>th</sup> century (Christol et al. 1993: 159-169, Ozsait 2002: 196).

### **I. Material and Methods**

We conducted surveys in pre-surveyed areas and in areas we have identified. We carried out in the surveys around Unye and around Gurpinar villages and Cevizderesi, only early settlement was found in Tozkoparan (Fig. 1, 2).

Tozkoparan is in the village of Gurpinar, 4 km east of the town of Unye, Ordu province, and north of Turkey. The settlement is on the road near the Black Sea coast and on the road to Kumru district (Fig. 1). Tozkoparan Cave, although it is locally called a cave, is actually a rock tomb. In surveys we made in the region Late Chalcolithic, Early Bronze Age and Roman Period sherds were identified in the area where the Tozkoparan tomb is located, with flint tools dating back to the Paleolithic period.

Tozkoparan settlement and rock tomb the area behind the Unye Cement Factory is located in the area where raw material is taken from the factory (Fig. 2). We did a detailed survey here. The settlement is in the hazelnut garden and in the valley of Cevizderesi. Due to dense vegetation the investigations we made around the Tozkoparan rock tomb were restricted. On the sloping ground, unauthorized work by treasure hunters were made in the lower parts of the area where the Tozkoparan rock tomb was found, and the end result was found in various Prehistoric Period finds. It is difficult to determine the exact location of the settlement. However, the finds are concentrated around the rock tomb.

There are various examples of sherds, bones, flint tools and chip fragments in the vicinity of the entrance to the rock tomb. Unauthorized work by treasure hunters around the rock tomb in the hazelnut garden revealed examples of sherds and flint tools. In our survey, not many finds were found on the surface due to dense vegetation. Unauthorized work by treasure hunters made on the lower part of the rocky area where the rock tomb is located has been reached to various Prehistoric finds.

In our research we have also studied the rock tomb. The rock tomb is on a natural rock mass. Tozkoparan rock tomb, with an arched entrance facing east, has two rooms. It is in a position dominated by the Cevizderesi valley where the rock tomb is located, and it is located at a high point in the Black Sea. Another area at the top of the rock tomb was not fully under-

stood as it was completely destroyed. It is separated from the other rock tombs in the region in terms of being two-roomed. There is a niche on the right side of the arched entrance. The presence of relief bull heads has been reported in the entrance (Kumandas 2004: 34, 39). On the wall to the right of the front grave room is a high bench and niche. Front and rear grave rooms are square/rectangular and have triangular roofs. There are two niches in the back grave room. Ordu rock tombs and Tozkoparan rock tomb rooms have similar characteristics to Paphlagonia tombs (Kumandas 2004: 42). Tozkoparan rock tomb is dated to Late Hellenistic/Early Roman Period.

Surrounding the Yuceler village, Cevizderesi, the researches carried out by Kokten indicate the presence of flint tools dating to various stages of the Paleolithic Period in the cave and formations (Kokten 1951). Kokten discovered hand axes and scraper tools dating to the Paleolithic at Cevizderesi (Kokten 1962). In Cevizdere village, there were no finds due to dense vegetation in the field inspections made in the areas mentioned by Kokten.

It has been learned from local sources that there are some natural caves in Tozkoparan location and some of these caves have been destroyed. We have studied a few natural caves east of Cevizderesi, but we have not found any trace of an old settlement.

## **II.Results and Discussion**

It is important that the settlement is the only early settlement on the north-east coast of Turkey. There is no other settlement on the northeastern shore of Turkey after Tozkoparan. For this reason it is important. Geographically located near the seaside settlement is in the valley of Cevizderesi. Tozkoparan settlement has a connection with the inner zone via the Cevizderesi. Ikiztepe is the only center on the coast where detailed archaeological excavations are conducted in the Middle Black Sea region of Turkey. For this reason, the Tozkoparan settlement and the Ikiztepe settlement are culturally compared in this article. Ikiztepe belongs to Late Chalcolithic Age, Early Bronze Age, Hittite Age, Iron Age and Roman Period. The Tozkoparan settlement belongs to Paleolithic Age, Late Chalcolithic Age, Early Bronze Age and Roman Period settlement. For this reason, there are earlier finds on Tozkoparan. The Tozkoparan settlement has undergone a cultural breakdown after the Early Bronze Age. The fact that the Hittite ceramics were not found in Tozkoparan suggests that the Hittite effect did not reach this area. Tozkoparan provides information on the Late Chalcolithic Age and Early Bronze Age culture of the coastal area where the settlement is located.

We have found sherds and many stone tools in the survey around Tozkoparan. However, 23 sherds (Fig. 3, 4) and 30 stone tools are evaluated in this paper (Fig. 5, 6).

The paste of the sherds are brown (10 pieces), red (6 pieces) and gray (7 pieces). All sherds are handmade. In the sherds, the pieces of the stone

are very intense. The surfaces of the sherds are also burnished. The burns on the surfaces of some of the sherds are erased.

When 23 sherds were evaluated, 3 different ware groups were determined. These are groups of ware with brown burnished wares (12 piece), red burnished wares (10 pieces) and gray burnished wares (1 piece).

Brown burnished wares (12 pieces): The surface of this group of wares is in the shades of brown. The paste of this group of wares consists of various shades of brown. There are very few gray paste (1 piece) and red paste (1 piece). These group wares have intense grit and plant additives.

Red burnished wares (10 pieces): The majority of this group of wares has a red / brick color or pale red color. The pastes of this group of wares are mostly in red and red shades (5 pieces). However, this group of wares has brown (3 pieces) and gray (2 pieces) pastes. This group of wares is intensely gritty added.

Gray burnished wares (1 piece): These group wares are dark gray. The inner surface is red color. The paste is brown, with grit and mineral added. The number of wares in this group is in fact too much. But since profiles are not known, they are not mentioned here.

## **II. I. Ware Forms**

When ware forms were evaluated, it was determined that they consist mostly of closed and open mouth forms (Fig. 4). In addition to the vertical mouth examples (Fig. 4, 1), miniature bowl examples (Fig. 4, 15-16) are found. The miniature vessels in Tozkoparan are especially similar to the Early Bronze Age cups (cup 8) of Ikiztepe (Alkim et al. 2003: p. XL, XLVI).

The majority of closed-mouth vessels are deep pots (Fig. 4). Similar to these potteries, they are similar to Ikiztepe Late Chalcolithic Age pots (h8 pot 53) and Ikiztepe Early Bronze Age pottery (h5b and h5c) (Alkim et al. 1988: p. XXXIX. 9). Open-mouth vessels consist of shallow vessels (Fig. 4, 14). The similarities of the open-mouthed vessels are similar to the Ikiztepe Early Bronze Age bowls (h4a, bowl 22) (Alkim et al. 1988: p. XXIV). Most of the deep wares consist of inward forms. Some examples are narrow neck (Fig. 4, 17). The inwardly and outwardly inclined bodies are as well as rounded bodies (Fig. 4, 20). Bottom samples are flat (Fig. 4, 21-23). These bottoms are similar to Ikiztepe Late Chalcolithic Age (7a) and Ikiztepe Early Bronze Age (h4c) (Alkim et al. 1988: p. XV).

Samsun-Ikiztepe is the nearest center where detailed research and archaeological excavations are conducted in the area. The sherds of the Tozkoparan settlement are similar to the Late Chalcolithic and Early Bronze Age sherds of Ikiztepe. Ikiztepe Early Bronze Age gritty, plant and mineral added sherds (h4-h5-h6) and Tozkoparan sherds are similar.

Tozkoparan settlement vessels, which are closely related to Ikiztepe, are similar to Ikiztepe's Late Chalcolithic Age vessels (h7-8) and Early Bronze Age vessels (h4-5-6). The existences of flint tools as well as sherds

from the Late Chalcolithic and Early Bronze Age in the settlement indicate early settlement in the region.

### **II.II. Ornaments**

The majority of Tozkoparan sherds consist of plain wares. Some wares have grips and handles (Fig. 4). These holders are under the mouth part. There are also those in the body (Fig. 4). The grips at the bodies are located in İlkiztepe in the Early Bronze Age (h4b). Similar to the grips are found in the Early Bronze Age pots (h5b-h5c, pot 9) of İlkiztepe (Alkim et al. 1988: p. XX). Tozkoparan wares have relief decoration and small double tuber decoration (Fig. 4, 17). There are no other ornaments in the pottery. İlkiztepe Early Bronze Age sherds are rich in form and decoration. However, the Tozkoparan finds are fewer and more simplified. The reason for this is the small amount of finds assessed in the Tozkoparan settlement. More finds could not be detected due to dense vegetation.

### **II. II. Stone Finds**

Tozkoparan settlement and Cevizderesi environments are the oldest Paleolithic settlements found on the northeastern coast of Turkey. The researches carried out by Kokten in 1945 were mentioned here. As a result of these investigations, the existence of finds dating to various phases of the Paleolithic Period is known.

A large number of examples of stone tools were found in the Tozkoparan settlement (Fig. 5, 6). We surveyed a large number of stone tools around Tozkoparan rock tomb, but here we presented 30 of them. It is necessary to evaluate these stone tools in two groups. Group 1 tools were made from natural stone (Fig. 5). Group 2 were made of flint tools (Fig. 6).

Group 1 tools are made of pestles and natural stream stones. In some of them, the marks of use and abrasion marks are clearly seen. The second groups of flint tools consist of hand-axe, scraper, and cutter samples. Usage marks and abrasion marks are seen on these tools. Since it is a surface find, it is not possible to definitively date it. However, it can be said that it dates back to Paleolithic Period date. This situation will be clarified as a result of a detailed archaeological excavation to be made in the future.

### **Conclusion**

Tozkoparan settlement is the only center for the Paleolithic Period on the northeast coast of Turkey. For this reason, it has a settlement earlier than other settlements in the region. After the Paleolithic period there is a cultural interruption. The settlement was re-settled in Late Chalcolithic and Early Bronze Age. However, then there was cultural interruption again. The Tozkoparan settlement has a unique location for the northeastern prehistoric archeology of Turkey and is an example for the Black Sea coast.

There are currently no archeological excavations on the Prehistoric Period in the north-east of Turkey. In archaeological researches made in the region, prehistoric settlements on coastal areas have not yet been identi-

fied. Many Prehistoric settlements have been documented in the inner part of the region. The excavations at Cingirtkayası and Kurul Castle in the province of Ordu are dated to the Hellenistic and Roman periods.

The Tozkoparan settlement is an important example for coastal settlements. Especially in the north-east of Turkey, the lack of prehistoric settlements makes Tozkoparan important. Tozkoparan is an important center for illuminating the earliest periods of the region. Tozkoparan settlement and Cevizderesi valley are the earliest settlement areas of the region. They have been settled here since the Paleolithic Period. The presence of Paleolithic finds in the Tozkoparan this settlement in the south-eastern part of the Black Sea is more prominent than other settlements in the region.

Tozkoparan settlement is the only settlement providing information for the Paleolithic Age, Late Chalcolithic Age and Early Bronze Age of the northeast coast of Turkey. The important point is that it is the most important center of the region belonging to the Paleolithic Age. The cultural impact of İkiztepe settlement reaches Tozkoparan but it does not go any further. The Tozkoparan settlement provides information for the Late Chalcolithic Age and the Early Bronze Age, but we have no knowledge for the Middle Bronze Age and the Hittite Period. The absence of data from the Middle Bronze Age and the Hittite Period suggests that the dominance and influence of the Hittites did not reach the northeast coast of Turkey and the settlement of the Tozkoparan.

In the north of Turkey, Prehistoric excavations are not sufficient. As a result of the archeological excavations to be carried out at Tozkoparan and Cevizderesi in the north-east of Turkey, information will be reached which will clearly reveal the early periods of this region of Turkey and the Black Sea region. It is a center to study especially for the Paleolithic Period researches. We believe that the work to be done here will lead to the scientific conclusions that concern not only the region but the entire Black Sea.

Tozkoparan and its surroundings are under the threat of the cement factory. The destruction has reached the area where the rock tomb is located. In addition, stone quarry and residential buildings in the immediate vicinity threaten Tozkoparan rock tombs and Prehistoric settlements.

## REFERENCES

- ALKİM, U. B., Alkim, H., Bilgi, O. (1988). *İkiztepe I. The First and Second Seasons' Excavations (1974-1975)*, Türk Tarih Kurumu, Ankara.
- ALKİM, U. B., Alkim, H., Bilgi, O. (2003). *İkiztepe II, Üçüncü, Dördüncü, Beşinci, Altıncı, Yedinci Dönem Kazıları (1976-1980)*, Türk Tarih Kurumu, Ankara.
- BAŞGELEN, N. (2010). *Tarihi ve Arkeolojisiyle Mesudiye*, Arkeoloji ve Sanat Yayınları, İstanbul.



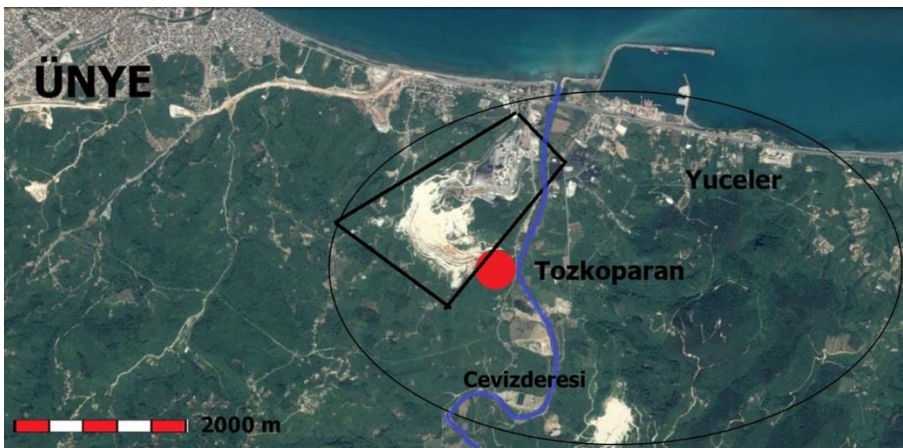
- CHRISTOL, M., Drew-Bear, T., Ozsait, M. (1993). "Trois Milliaires d'Asie Mineure", *Anatolia Antiqua*, II: 159-169.
- ÇILINGIROGLU, A., (1987). "Van Bölgesi ve Ordu İli Yüzey Araştırması 1985", *Araştırma Sonuçları Toplantısı IV*: 311-322.
- EROL, A. F. (2015). "Ordu İli Fatsa İlçesi Cingirt Kayası Kazısı 2013", *Kazı Sonuçları Toplantısı*, 36 (1): 383-400.
- EROL, A. F. (2016). "Fatsa İlçesi Cingirt Kayası Kazısı 2014", *Kazı Sonuçları Toplantısı*, 37 (2): 559-572.
- İŞİK, A. (2001). *Antik Kaynaklarda Karadeniz Bölgesi*, Türk Tarih Kurumu, Ankara.
- KÖKTEN, I. K. (1951). "Kuzeybatı Anadolu'nun Tarihöncesi Hakkında Yeni Gözlemler", *Ankara Üniversitesi Dil ve Tarih Coğrafya Fakültesi Dergisi*, 9 (3): 201-214.
- KÖKTEN, I. K. (1962). "Anadolu Ünye'de Eskitaş Devrine (Paleolitik) Ait Yeni Buluntular", *Ankara Üniversitesi Dil ve Tarih-Coğrafya Fakültesi Dergisi*, 20 (3-4): 275-278.
- KUMANDAS, H. (2004). *Rock Tombs of Ordu*, Ataturk University. Institute of Social Sciences, Master Thesis, Erzurum.
- ÖZSAİT, M. (1992). "1990 Yılında Ordu-Mesudiye Çevresinde Yapılan Yüzey Araştırmaları", *Araştırma Sonuçları Toplantısı*, IX: 357-376.
- ÖZSAİT, M. (1995). "1993 Yılı Ordu-Mesudiye ve Sivas-Koyulhisar Yüzey Araştırmaları", *Araştırma Sonuçları Toplantısı*, XII: 459-482.
- ÖZSAİT, M. (2002). "1999-2000 Yıllarında Amasya-Merzifon ve Ordu-Kumru Yüzey Araştırması", *Araştırma Sonuçları Toplantısı*, 19 (2): 191-206.
- ÖZSAİT, M. (2008). "Arkeolojik Verilerin Işığı Altında Ünye", *Araştırma Sonuçları Toplantısı*, 25 (2): 293-306.
- TEKİN, O. (2008). *Eski Yunan ve Roma Tarihine Giriş*, İletişim Yayınları, İstanbul.
- Xenophon, *The Anabasis*, Trans. by E. Spelman (1839), Harper Brothers, New York.

Harun Oy

Ekler

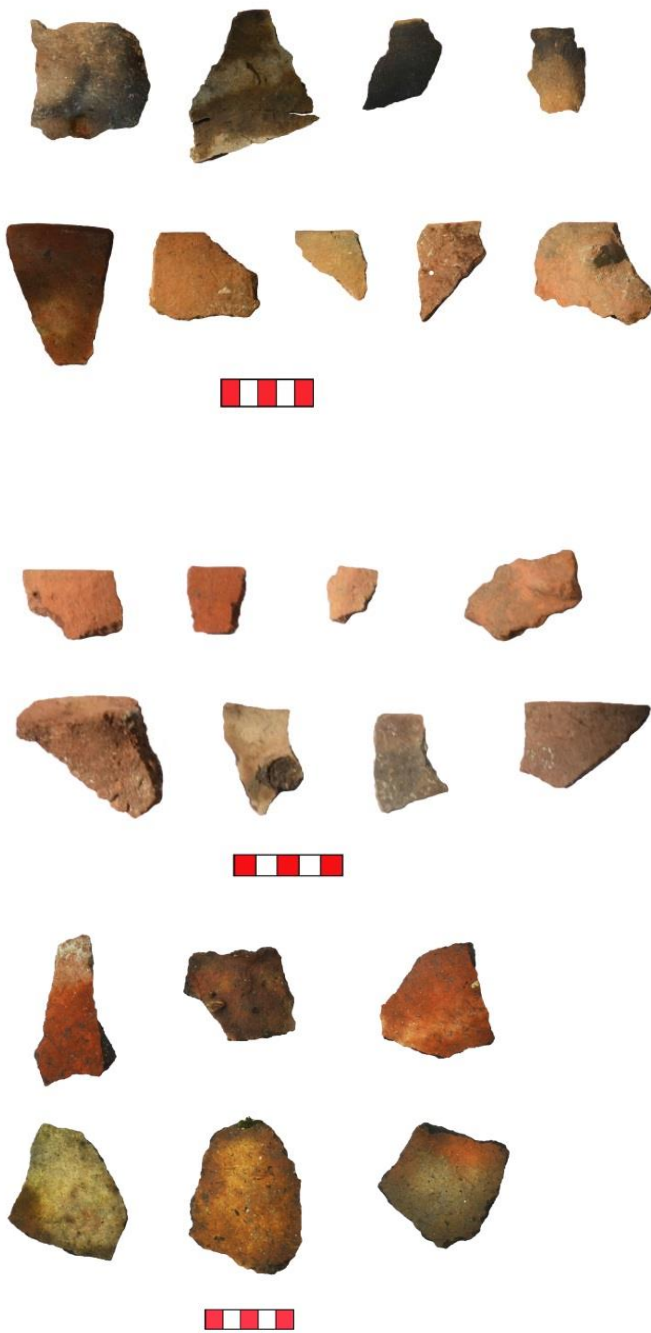


**Fig. 1.** Tozkoparan settlement

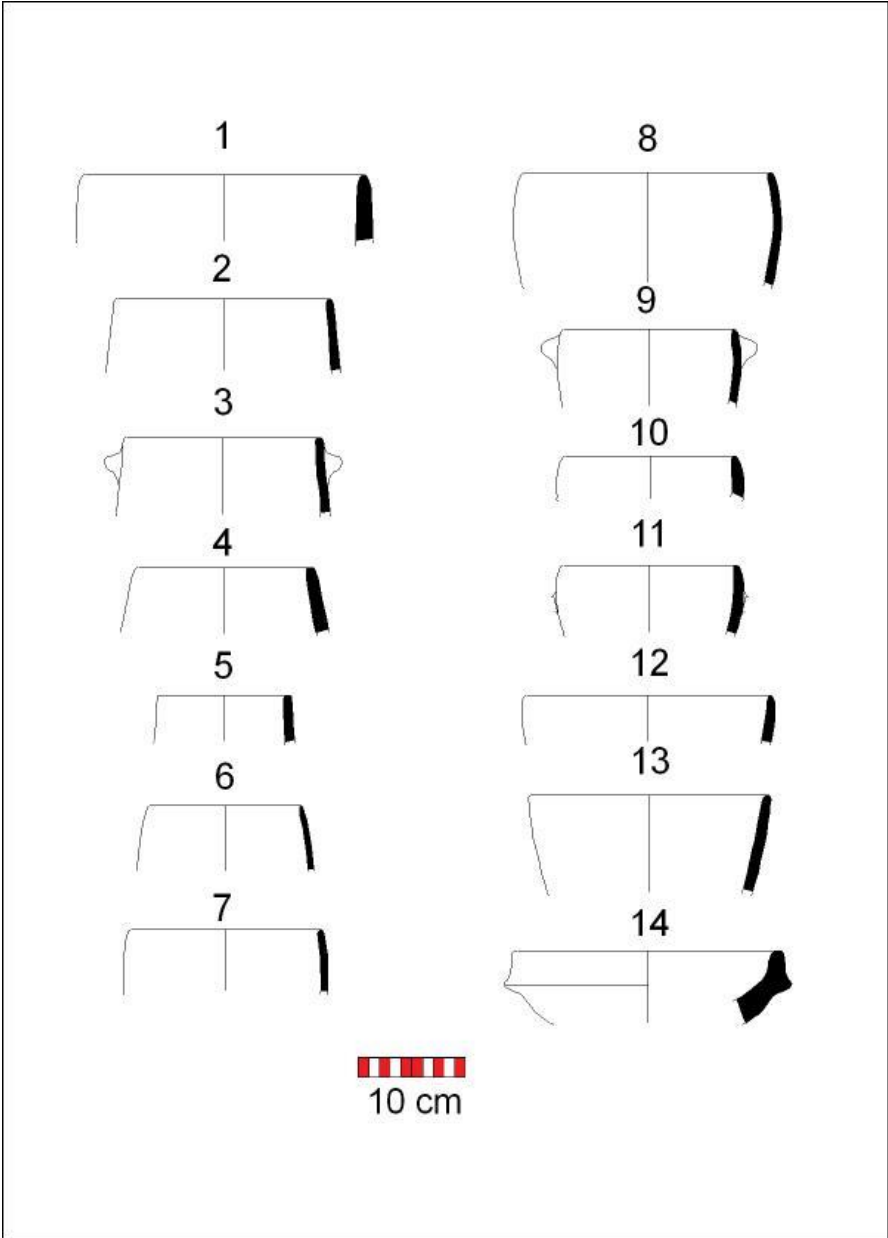


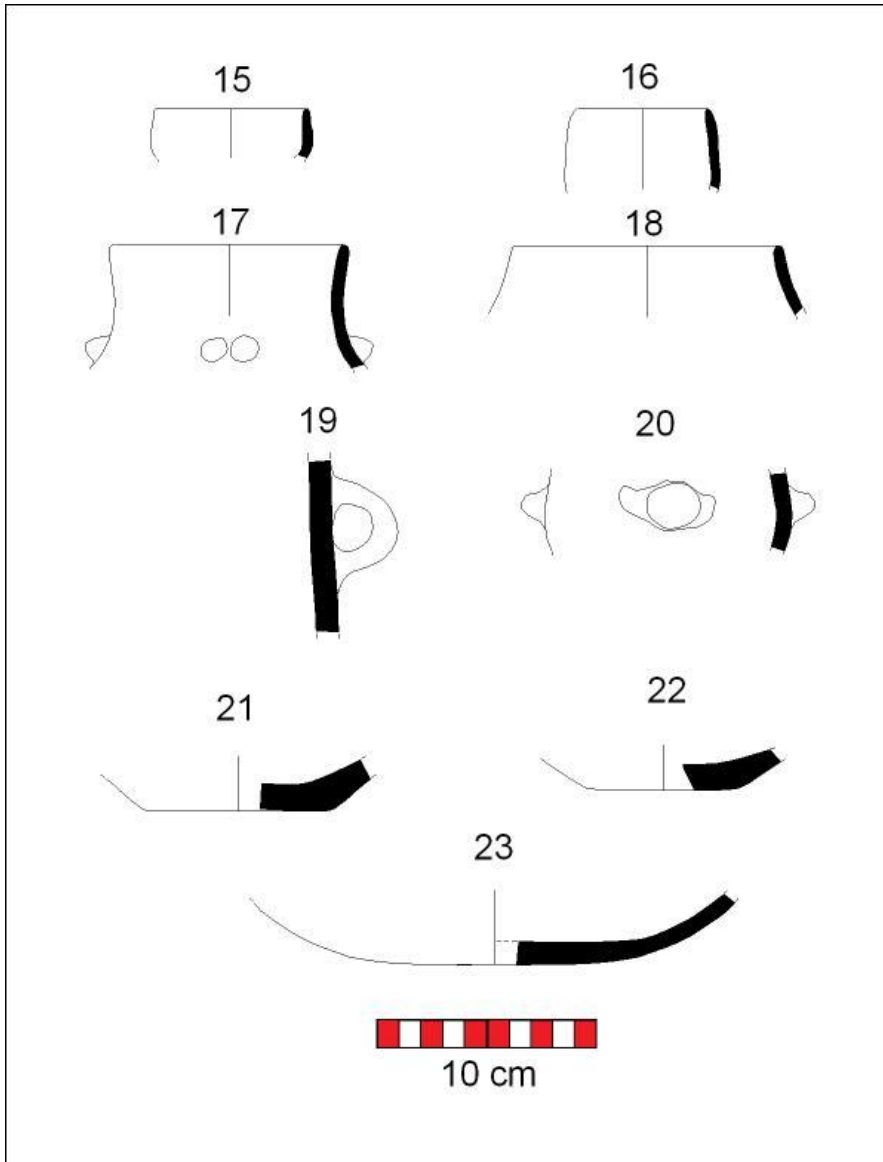
**Fig. 2.** Tozkoparan settlement

The Prehistoric Settlement at Tozkoparan (Unye-Ordu-Turkey)



**Fig. 3.** Sherds





**Fig. 4.** Sherds

Harun Oy



Fig. 5. Stone tools.



The Prehistoric Settlement at Tozkoparan (Unye-Ordu-Turkey)



**Fig. 6.** Flint tools.